

FEATURES

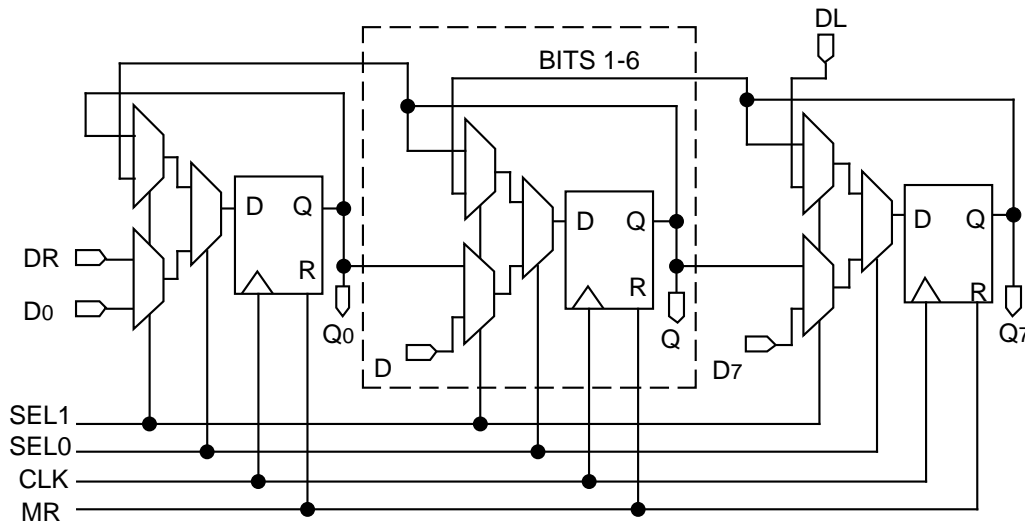
- 700MHz min. shift frequency
- Extended 100E VEE range of -4.2V to -5.5V
- 8 bits wide
- Bi-directional
- Four selectable modes for full functionality
- Asynchronous Master Reset
- Fully compatible with industry standard 10KH, 100K ECL levels
- Internal 75KΩ input pulldown resistors
- Fully compatible with Motorola MC10E/100E141
- Pin-compatible with E241
- Available in 28-pin PLCC package

DESCRIPTION

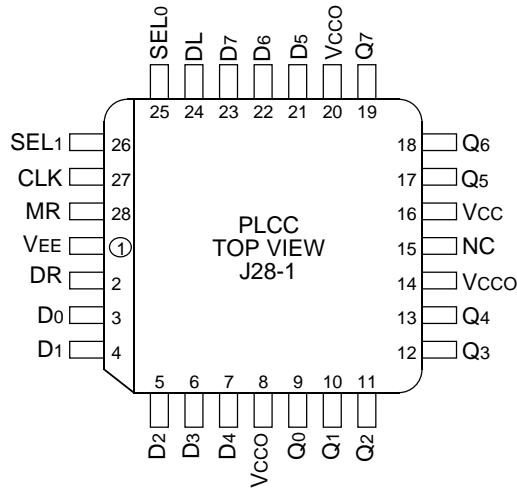
The SY10/100E141 are 8-bit, full-function shift registers designed for use in new, high-performance ECL systems. The E141 performs serial/parallel in and serial/parallel out, shifting in either direction. The eight inputs D₀-D₇ accept parallel input data, while DL/DR accept serial input data for left/right shifting.

The two select pins, SEL₀ and SEL₁ permit four modes of operation: Load, Hold, Shift Left and Shift Right, as shown in the Truth Table. Input data is clocked into the register on the rising clock edge after meeting the minimum set-up time. A logic HIGH on the Master Reset (MR) pin asynchronously resets all the registers to zero.

BLOCK DIAGRAM



PIN CONFIGURATION



PIN NAMES

| Pin | Function |
|------------|----------------------|
| D0-D7 | Parallel Data Inputs |
| DL, DR | Serial Data Inputs |
| SEL0, SEL1 | Mode Select Inputs |
| CLK | Clock |
| Q0-Q7 | Data Outputs |
| MR | Master Reset |
| VCC0 | Vcc to Output |

TRUTH TABLE

| Function | DL | DR | SEL0 | SEL1 | MR | CLK | Q0 | Q1 | Q2 | Q3 | Q4 | Q5 | Q6 | Q7 |
|-------------|----|----|------|------|----|-----|----|----|----|----|----|----|----|----|
| Load | X | X | L | L | L | Z | D0 | D1 | D2 | D3 | D4 | D5 | D6 | D7 |
| Shift Right | X | L | L | H | L | Z | L | Q0 | Q1 | Q2 | Q3 | Q4 | Q5 | Q6 |
| | X | H | L | H | L | Z | H | L | Q0 | Q1 | Q2 | Q3 | Q4 | Q5 |
| Shift Left | L | X | H | L | L | Z | L | Q0 | Q1 | Q2 | Q3 | Q4 | Q5 | L |
| | H | X | H | L | L | Z | Q0 | Q1 | Q2 | Q3 | Q4 | Q5 | L | H |
| Hold | X | X | H | H | L | Z | Q0 | Q1 | Q2 | Q3 | Q4 | Q5 | L | H |
| | X | X | H | H | L | Z | Q0 | Q1 | Q2 | Q3 | Q4 | Q5 | L | H |
| Reset | X | X | X | X | H | X | L | L | L | L | L | L | L | L |

DC ELECTRICAL CHARACTERISTICS

VEE = VEE (Min.) to VEE (Max.); VCC = VCC0 = GND

| Symbol | Parameter | TA = 0°C | | | TA = +25°C | | | TA = +85°C | | | Unit | Condition | |
|-----------------|----------------------|----------|------|------|------------|------|------|------------|------|------|------|-----------|-----|
| | | Min. | Typ. | Max. | Min. | Typ. | Max. | Min. | Typ. | Max. | | | |
| I _{IH} | Input HIGH Current | — | — | 150 | — | — | 150 | — | — | 150 | μA | — | |
| I _{EE} | Power Supply Current | — | 131 | 157 | — | 131 | 157 | — | 131 | 157 | mA | — | |
| | | 10E | — | 131 | 157 | — | 131 | 157 | — | 131 | | | 157 |
| | | 100E | — | 131 | 157 | — | 131 | 157 | — | 151 | | | 181 |

AC ELECTRICAL CHARACTERISTICSV_{EE} = V_{EE} (Min.) to V_{EE} (Max.); V_{CC} = V_{CCO} = GND

| Symbol | Parameter | T _A = 0°C | | | T _A = +25°C | | | T _A = +85°C | | | Unit | Condition |
|----------------------------------|--|----------------------|---------------------|-------------|------------------------|---------------------|-------------|------------------------|---------------------|-------------|------|-----------|
| | | Min. | Typ. | Max. | Min. | Typ. | Max. | Min. | Typ. | Max. | | |
| fSHIFT | Max. Shift Frequency | 700 | 900 | — | 700 | 900 | — | 700 | 900 | — | MHz | — |
| tPLH tPHL | Propagation Delay to Output CLK MR | 625 600 | 750 725 | 975 975 | 625 600 | 750 725 | 975 975 | 625 600 | 750 725 | 975 975 | ps | — |
| tS | Set-up Time D SEL ₀ SEL ₁ | 175 350 300 | 25 200 150 | — — — | 175 350 300 | 25 200 150 | — — — | 175 350 300 | 25 200 150 | — — — | ps | — |
| tH | Hold Time D SEL ₀ SEL ₁ | 200 100 100 | -25 -200 -150 | — — — | 200 100 100 | -25 -200 -150 | — — — | 200 100 100 | -25 -200 -150 | — — — | ps | — |
| tRR | Reset Recovery Time | 900 | 700 | — | 900 | 700 | — | 900 | 700 | — | ps | — |
| tPW | Minimum Pulse Width CLK, MR | 400 | — | — | 400 | — | — | 400 | — | — | ps | — |
| tSkew | Within-Device Skew | — | 60 | — | — | 60 | — | — | 60 | — | ps | 1 |
| t _r t _f | Rise/Fall Time 20% to 80% | 300 | 525 | 800 | 300 | 525 | 800 | 300 | 525 | 800 | ps | — |

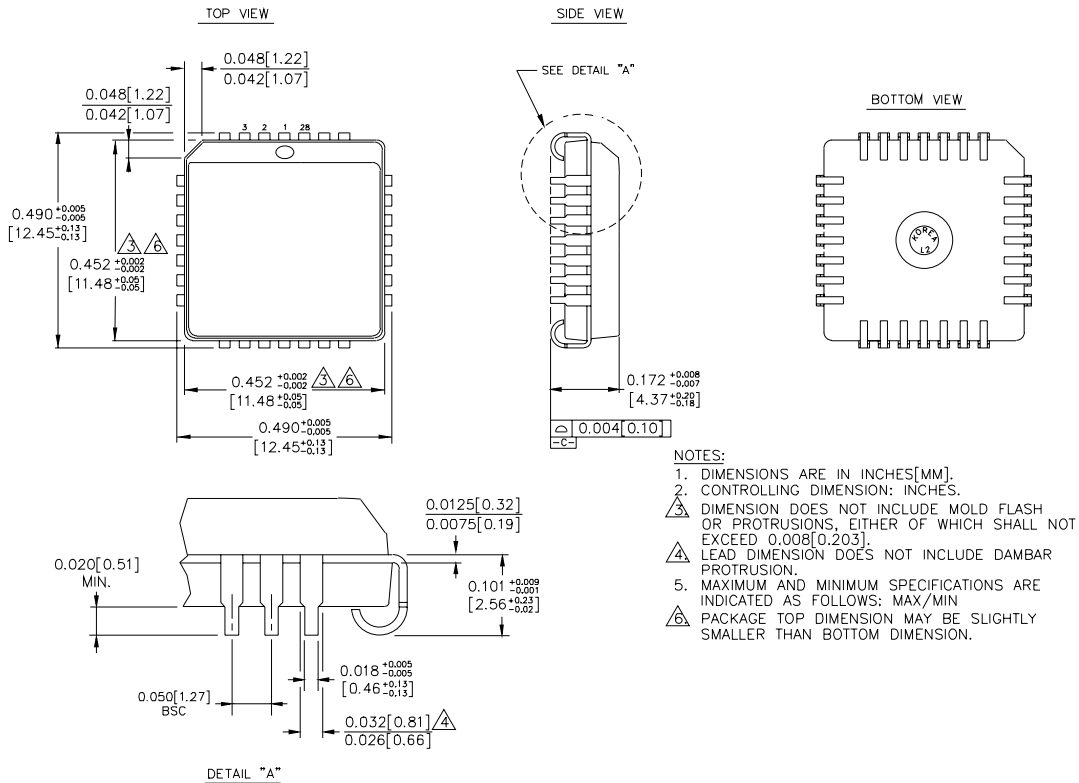
NOTE:

1. Within-device skew is defined as identical transitions on similar paths through a device.

PRODUCT ORDERING CODE

| Ordering Code | Package Type | Operating Range |
|---------------|--------------|-----------------|
| SY10E141JC | J28-1 | Commercial |
| SY10E141JCTR | J28-1 | Commercial |
| SY100E141JC | J28-1 | Commercial |
| SY100E141JCTR | J28-1 | Commercial |

28 LEAD PLCC (J28-1)



- NOTES:
1. DIMENSIONS ARE IN INCHES[MM].
 2. CONTROLLING DIMENSION: INCHES.
 3. DIMENSION DOES NOT INCLUDE MOLD FLASH OR PROTRUSIONS, EITHER OF WHICH SHALL NOT EXCEED 0.008[0.203].
 4. LEAD DIMENSION DOES NOT INCLUDE DAMBAR PROTRUSION.
 5. MAXIMUM AND MINIMUM SPECIFICATIONS ARE INDICATED AS FOLLOWS: MAX/MIN
 6. PACKAGE TOP DIMENSION MAY BE SLIGHTLY SMALLER THAN BOTTOM DIMENSION.

Rev. 03

MICREL-SYNERGY 3250 SCOTT BOULEVARD SANTA CLARA CA 95054 USA

TEL + 1 (408) 980-9191 FAX + 1 (408) 914-7878 WEB <http://www.micrel.com>

This information is believed to be accurate and reliable, however no responsibility is assumed by Micrel for its use nor for any infringement of patents or other rights of third parties resulting from its use. No license is granted by implication or otherwise under any patent or patent right of Micrel Inc.

© 2000 Micrel Incorporated